

SF PRENTIC Series | Desktop Robot Model: SF8-K950

The ultra-compact SF PRENTIC series are compact and flexible tabletop robots that are powerful, fast, and efficient, enabling extremely precise and agile robots for various applications in the medium load class, no matter how small the parts are.

SF PRENTIC has a maximum load capacity of 7 kg and an arm span of 956 mm. With the introduction of the SF PRENTIC series, We are redefining the benchmark for robots in the tabletop class below 7 kg.

The SF PRENTIC series is ideal for applications in tight spaces such as 3C, handling, painting, welding, pick/pack, and assembly /distribution.

This desktop-class robot is tailored for the pursuit of performance and throughput.

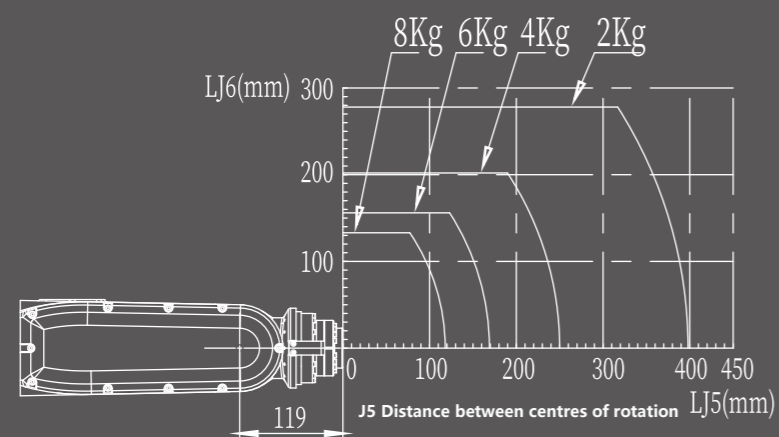
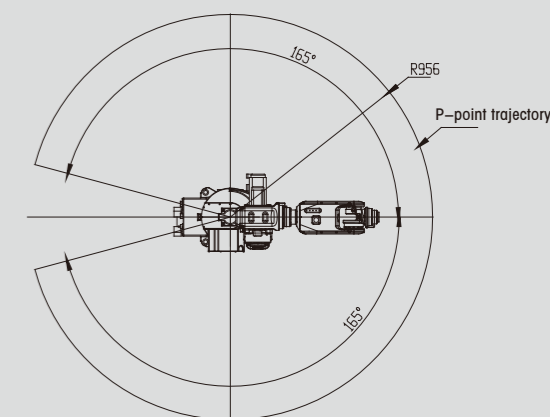
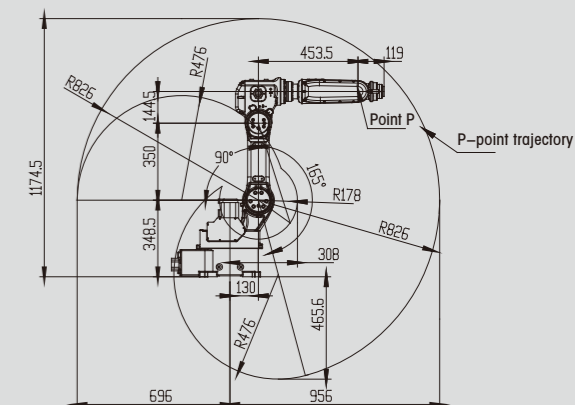
Applications



SF8-K950 Data Overview

Model	SF8-K950	
Structure	Vertically Articulated	
Number of Axis	6	
Radius	956mm	
Payload	8kg	
Repeatability	±0.05mm	
Drive Mode	AC Servo Motor	
Maximum Speed	J1	230° /s
	J2	230° /s
	J3	200° /s
	J4	240° /s
	J5	400° /s
	J6	600° /s
Range of Motion	J1	±165°
	J2	+90° /-160°
	J3	+148° /-89°
	J4	±180°
	J5	±119°
	J6	±360°
Allowable Moment	J4	15.6N.M
	J5	15.6N.M
	J6	8.5N.M
Allowable Inertia	J4	0.43kg.m2
	J5	0.43kg.m2
	J6	0.13kg.m2
Protection Rating	IP65	
Operating Conditions	Temp.	0-45°C
	Humidity	Below 95%RH
	Vibration	Below 4.9m/s2
	Other	Eliminate Signal Noise
Base Size	280*362mm	
Height	911.5mm	
Weight	66KG	
Mounting Positions	Floor, Wall, Ceiling	
Power Consumption	1.5kVA	

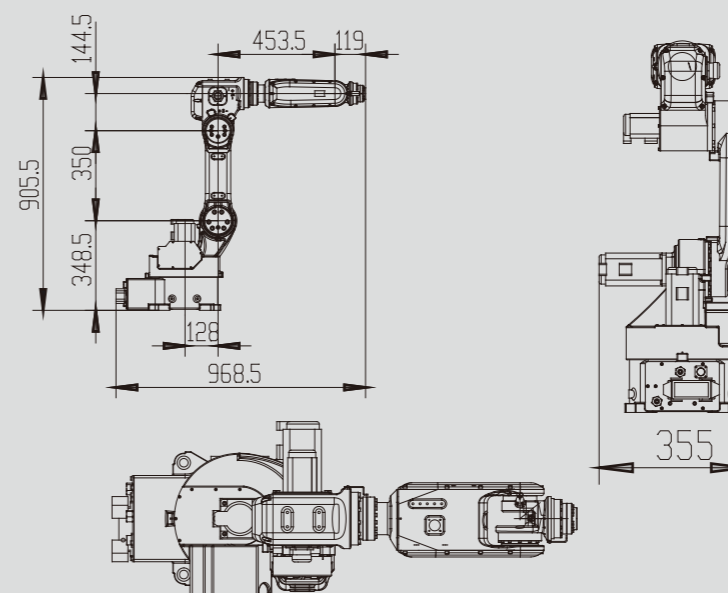
SF8-K950 Range of Motion



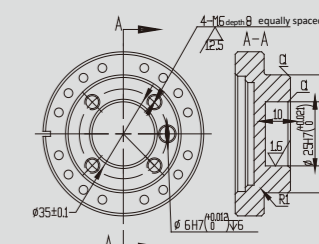
SF8-K950 Wrist load torque chart

Note: The centre of gravity point of the load should be within the wrist torque diagram when in use

External & Installation Dimensions



A-Way Diagram (End Flange Mounting Dimensions)



B-Way Diagram (Base Mounting Dimensions)

